

6.故障排除指南

故障现象	原因分析	可能的解决方案
设备已经插电但是根本不加热升温	<ol style="list-style-type: none">1. 没有供电或电力不够。2. 电源线并未完全连接到电源或加热器上。3. 电源线损坏。4. 加热设备损坏。	<ol style="list-style-type: none">1. 检查设备的供电情况。应当与加热器标签上的要求相配。2. 确保电源线两端都紧固连接上了。3. 始终用原装的电源线来更换已损坏的电源线。4. 更换加热设备。
冷冻仓不冷	冰核没有预先冷冻	把冰核放在冰箱或冷库冻12小时以上
产品内持久有气味	<ol style="list-style-type: none">1. 开始启动设备。2. 食品遗留在产品内经历过长保存期。	<ol style="list-style-type: none">1. 首次使用时，请将设备插上电并开着门运行1小时以便将空气排出。2. 放入一盆水，内有一些小苏打，开启加热器1小时。

温馨提示：

警告！有触电危害——在维修之前断开电源。

请勿擅自维修电源适配器，需交由专业服务人员才能打开。

以上为常见故障诊断和排除方法，对于其它故障，请与我司客户服务部联系。

7.服务保证

保证新产品从其自授权的分销店发运之日起的1年期限内没有材料和制造工艺方面的缺陷。



冷暖运输箱 使用说明书



JW-EPP170E

广东普飞酒店用品有限公司

地址：佛山市顺德区均安镇智安北路15号

电话：0757-25590999

传真：0757-25386099

网址：<http://www.jiwins.cn>

*使用产品前，请仔细阅读使用说明书！

*如有技术变动，恕不另行通知！

1. 产品介绍

感谢您使用我司产品。本用户手册用于操作和维护您的冷暖运输箱，具体以实物为准，图片仅供参考。如果您在使用上仍有疑问，请联络您的销售代表，访问我们的网站 www.jiwins.cn 或致电我们的客户服务部门，电话为 +86 757 25590999。

2. 安全说明

重要提示：使用之前请仔细阅读本说明书，并妥善保管以备将来参考。

- 仅使用电源适配器标签上指明的电源类型（电压、电相、频率）。
- 如果电源线磨损或损坏，请不要使用。
- 请将设备连接到经过适当接地的电源。
- 仅使用制造商许可的电线和更换部件。

警告！不要在潮湿条件下使用本设备。

警告！清洗或维修之前应按下设备的电源插头。

警告！清洗之前应将电源线从碳纤加热芯上拔下。只能使用湿布进行清洁。

警告！在任何情况下都要避免弄湿碳纤加热芯。

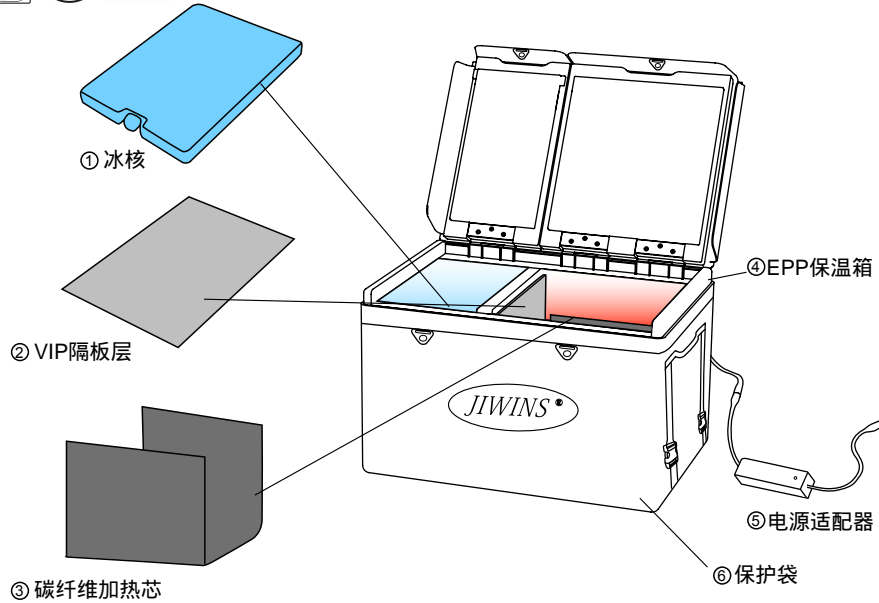
警告！在把碳纤加热芯从保温箱里拆卸下来之前，应按下电源线。

警告！使用时要注意不要划烂VIP板

3. 部件分解图

为了方便用户，本产品已在厂家组装完毕。无需组装。

电源适配器输入：100-240V~50/60Hz 2.5A；输出：12V=10A



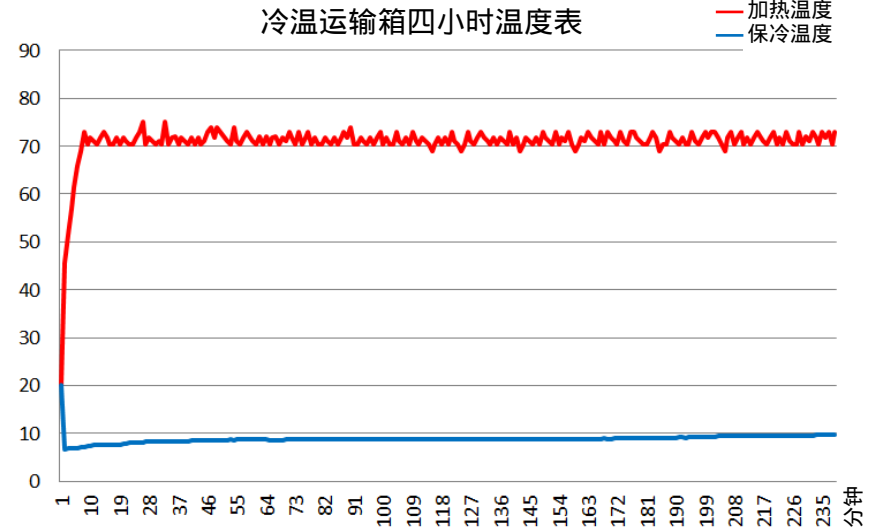
①冰核	提供长时间保冷效果	④EPP保温箱	坚固轻便，隔热，保冷
②VIP隔板层	降低冷热空间的互相影响	⑤电源适配器	电源供应器
③碳纤维加热芯	能保持箱内温度60摄氏度以上	⑥保护袋	耐磨，防水有效保护保温盒

4. 操作说明

警告！请勿把食物直接与碳纤加热芯接触。

1. 请接入100-240V电源。适配器上清楚注明电源信息。
2. 当电源开启时，适配器上的灯变亮，表明加热器正在工作中。
3. 通电7分钟后，空间温度达度70°。
4. 在装入热食之前，请预先加热空储仓，保持柜门关闭，持续10分钟。把装盘的热食放入保温仓中，紧密锁闭上保温箱。
5. 请预先把冰核冷冻12小时以上，再插入EPP保温箱的冷冻仓使用，把需要保冷的食物放进冷冻仓中，紧密锁闭上保温箱。
6. 冰核放置冷冻仓5分钟后，空间温度降至8°。
7. 冰核在正常使用的情况下，冷冻仓的温度能保持在10°以下4小时以上。

在20°环境下，保冷加热测试如下图：



5. 保养与维护

冰核、VIP隔板层和碳纤加热芯

警告：在清洁或维护之前请彻底冷却加热设备。

警告：请勿将碳纤加热芯浸入水中或在上面积水。

警告：在清洗之前请将碳纤加热芯把电源拔下。

1. 冰核、VIP隔板层和碳纤加热芯从保温箱里拆下之后，请用软布清洗。
2. 在重新组装和使用碳纤加热芯之前请彻底风干所有部件或用干净的柔软干布擦干。
3. 仔细地将碳纤加热芯放入保温箱，粘紧魔术贴，把电源线对准保温箱内的孔，伸出保温箱外与电源适配器接上。
4. 检查插头和电源线，如果磨损或折断，请更换。

保温箱

1. 请用中性洗涤剂、热水和软布清洗。请勿使用含有氨水或漂白剂的洗涤剂或清洁剂。
2. 用柔软的布或刷子手洗清洁所有内部和外部表面。请勿使用钢丝棉或研磨擦洗垫或刷子。
3. 用温水或热水冲洗产品，去除肥皂和污垢。
4. 风干或用干净的柔软干布擦干保温盒。

6.Troubleshooting Guide

Problem	Possible Causes	Possible Solutions
Unit is plugged in but does not heat up at all.	<ol style="list-style-type: none">1. There is no power or power shortage.2. Power cord is not fully connected to the power source or to the carbon fiber heating core .3. Power cord is damaged..4. Carbon fiber heating core is damaged	<ol style="list-style-type: none">1. Check the power supplied to the unit. It should match the requirements on the adapter label.2. Make sure both ends of the power cord are connected securely.3. Always replace damaged power cord with the manufacturer power cord.4. Replace the heater unit.
The freezer is not cold at all.	The ice core was not frozen in advance.	Put the ice core in freezer for more than 12 hours.
Persistent odor inside the product.	<ol style="list-style-type: none">1. Initial start-up of unit.2. Food left in the cabinet for overly-long holding periods.	<ol style="list-style-type: none">1. For first-time use, plug in and run the unit with the door open for 1 hour to air out.2. Place a pan of water with some baking soda in it and turn on the heater for 1 hour.

Tips:
Warning! Disconnect power supply before servicing.
Do not repair the power adapter without authorization. Have it handled by qualified service personnel.
Above are common troubleshooting methods. For other problems, please contact our customer service department.

7.Service guarantee

Guarantee that the product will be free from defects in materials and manufacturing processes for a period of one year from the date of shipment from authorized JIWINS distribution locations.



Cooling and Warming Food Carrier User's Manual



JW-EPP170E

Guangdong Perfect CO.,LTD.
Add: No. 15 Zhi'an North Road, Jun'an Town,
Shunde District, Foshan, Guangdong, China
Tel : 0757 - 25590999
Fax : 0757 - 25386099
<http://www.jiwins.cn>

* Please read the instruction manual carefully before using the product!
* Subject to technical changes without notice!

1.Introduction

Thank you for using our products. This user manual is used to operate and maintain your heating and cooling transport box.If you still have questions about use, please contact your sales representative, visit our website www.jiwins.cn or call our customer service department at +86 757 25590999.

2. Safety Instructions

IMPORTANT: Read all instructions prior to use and save for future reference.

- Use only type of power supply (voltage, phase, frequency) indicated on the adapter unit label.
- Do not use if power cord is frayed or damaged.
- Connect unit to properly grounded power source.
- Use only manufacturer authorized power cord and replacement parts.

Warning! Do not use this product in wet or damp conditions.

Warning! Unplug unit prior to cleaning or service.

Warning! Remove power cord from carbon fiber heating core prior to cleaning. Clean with damp cloth only.

Warning! Do not submerge carbon fiber heating core in water and never spray water on or near it.

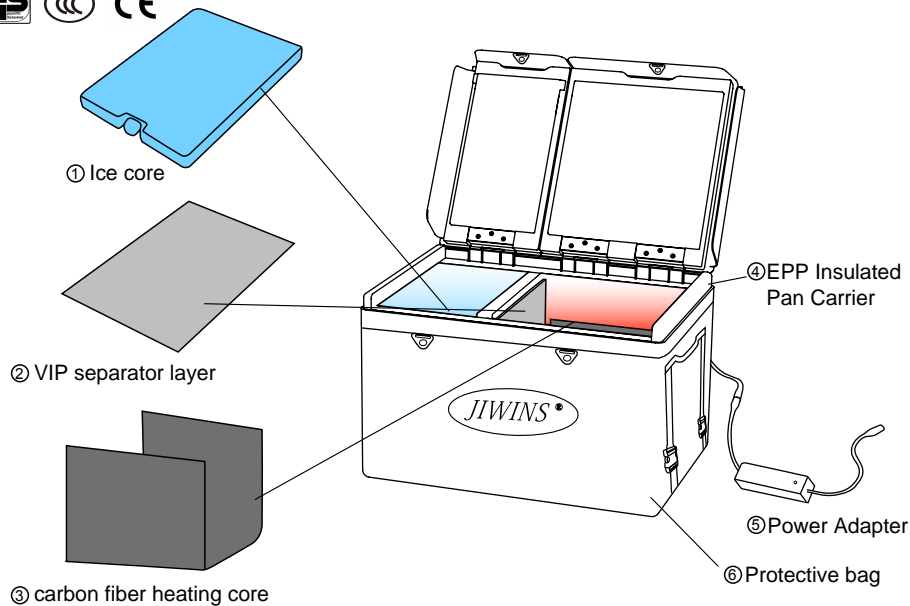
Warning! Unplug the power cord before removing the carbon fiber heating core from the box.

Warning! Do not spoil the VIP separator layer during use.

3. Exploded Product Views

The product is factory assembled for your convenience. No assembly is required.

Power Adapter INPUT: 100-240V~50/60Hz 2.5A ; OUTPUT:12V ~ 10A



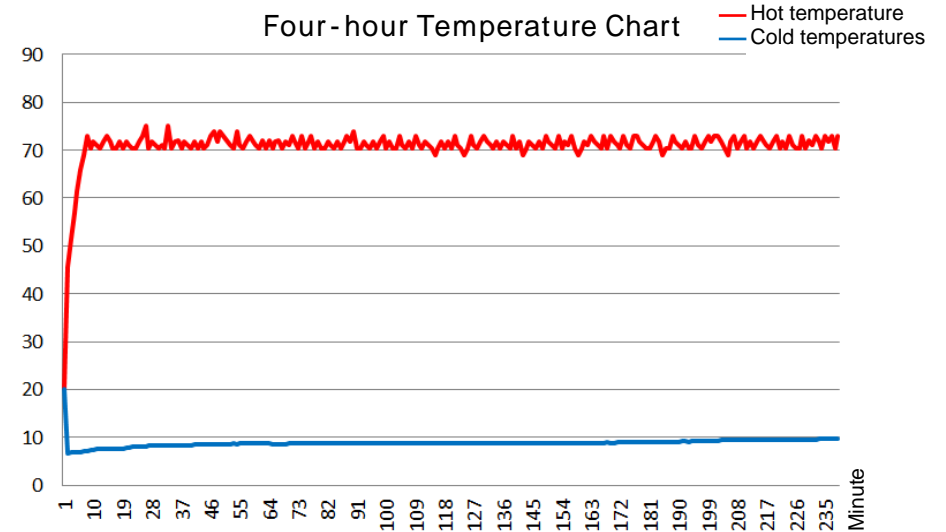
①Ice core	Maintain the cooling condition for a long time
②VIP separator layer	Lower interaction between hot and cold spaces
③carbon fiber heating core	Keep the temperature inside the box above 60
④EPP Insulated Pan Carrier	Durable and lightweight, insulating and cooling
⑤Power Adapter	Power Supplier
⑥Protective bag	Abrasion resistant and waterproof, protecting the box effectively

4.Operating Instructions

Warning! Do not directly contact food with the carbon fiber heating element.

1. Plug into power supply 100-240V. The power information is clearly marked on the adapter.
2. Red light on front of heated door indicates power ON and the heater is working.
3. After being electrified 7 minutes, the space temperature reaches 70 .
4. Keep the door closed and warm up the empty box in advance for 10 minutes before putting the plate of hot food into the box, then close the incubator tightly.
5. Please freeze the ice core for more than 12 hours before inserting it into the freezing compartment of the EPP incubator. Then put into the food and close the incubator tightly.
6. The space temperature drops to 8 after inserting the ice core into the freezing compartment 5 minutes.
7. Under normal use, the temperature of the freezer can be kept below 10 for more than 4 hours.

At 20 environment, cooling and warming tests results are shown as below:



5.Care and Maintenance

Ice core, VIP separator layer and carbon fiber heating core

WARNING: Completely cool carbon fiber heating core unit prior to cleaning or maintenance.

WARNING: Do not submerge carbon fiber heating core in water or spray water on it.

WARNING: Please unplug the carbon fiber heating core from power source before cleaning.

1. After removing the ice core, VIP baffle layer and carbon fiber heating core from the incubator, please clean it with a soft cloth.
2. Before re-assembling and using the carbon fiber heating core, completely air dry all components or wipe with dry, clean soft cloth.
3. Carefully stick the carbon fiber heating core into the insulation box, aligning the power cord with the hole in the insulation box, and then stretch it to connect to the power adapter.
4. Inspect the plug and power cord and replace them if they are frayed or broken.

EPP Food Carrier

1. Clean with mild detergent, hot water and a soft cloth. **DO NOT** use detergents or cleaners containing ammonia or bleach.

2. Using a soft cloth or brush to hand wash all interior and exterior surfaces.

DO NOT use steel wool or abrasive scrub pads or brushes.

3. Rinse product with warm or hot water to remove soap and dirt.

4. Air dry or dry carrier outside and inside with clean, dry, soft cloth.